

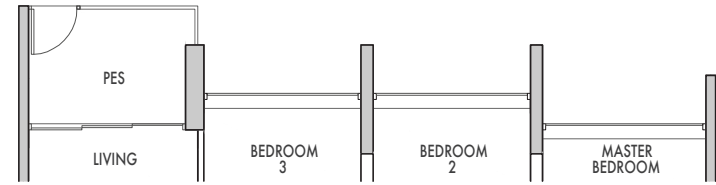
3 BEDROOM DELUXE + STUDY

TYPE C1a (p)

88 sqm (947 sqft)

BLOCK 81
#01-22

**MIRRORED
BLOCK 81**
#01-21



TYPE C1a

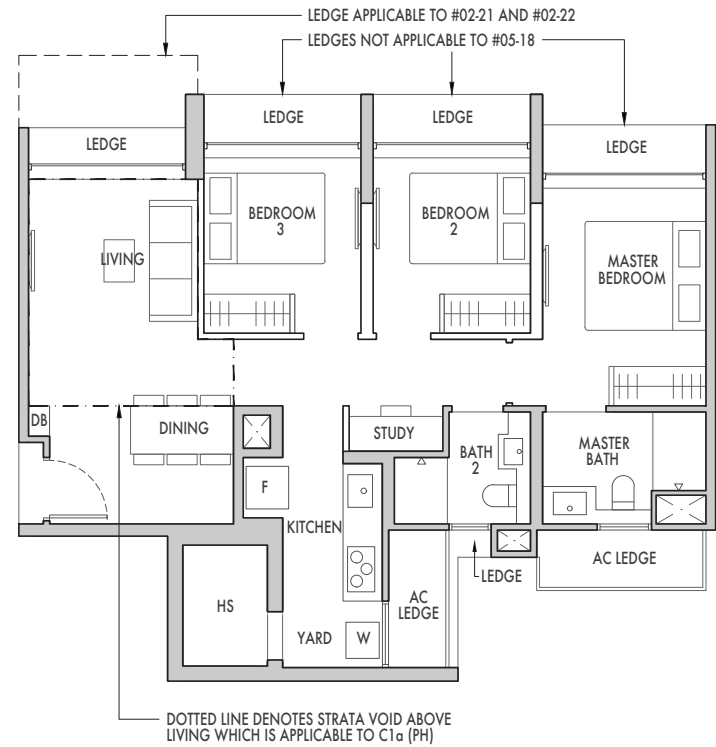
83 sqm (893 sqft)

BLOCK 79
#05-18 to #14-18

**MIRRORED
BLOCK 79**
#05-17 to #14-17

BLOCK 81
#02-22 to #14-22

BLOCK 81
#02-21 to #14-21



TYPE C1a (PH)

96 sqm (1033 sqft)
Strata void area of 13 sqm/ 140 sqft above Living with high volume ceiling of approx. 5.2m

BLOCK 79
#15-18

**MIRRORED
BLOCK 79**
#15-17

BLOCK 81
#15-22

BLOCK 81
#15-21

LEGEND

W - Washer F - Fridge

Area includes AC ledge, balcony, private enclosed space (PES) and strata void (where applicable). The above plans and illustrations are subject to change as may be required or approved by the relevant authorities. All floor areas are approximate only and subject to final survey. Please refer to key plan for orientation. Service voids and ledges are excluded from strata area. The balcony shall not be enclosed. Only approved balcony screen are to be used. For an illustration of the approved balcony screen, please refer to page 16 of this brochure.



SCALE



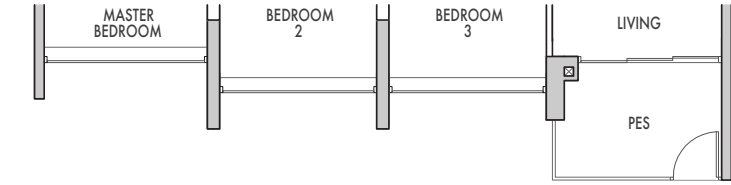
3 BEDROOM PREMIUM + STUDY

TYPE C1b (p)

88 sqm (947 sqft)

BLOCK 83
#01-28

BLOCK 91
#01-44

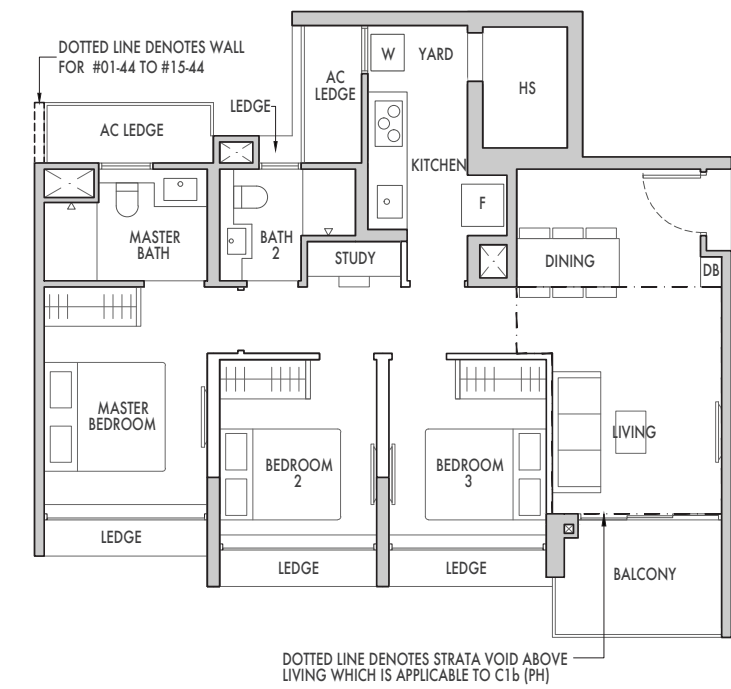


TYPE C1b

88 sqm (947 sqft)

BLOCK 83
#02-28 to #14-28

BLOCK 91
#02-44 to #14-44



TYPE C1b (PH)

100 sqm (1076 sqft)
Strata void area of 12 sqm/ 129 sqft above Living with high volume ceiling of approx. 5.2m

BLOCK 83
#15-28

BLOCK 91
#15-44

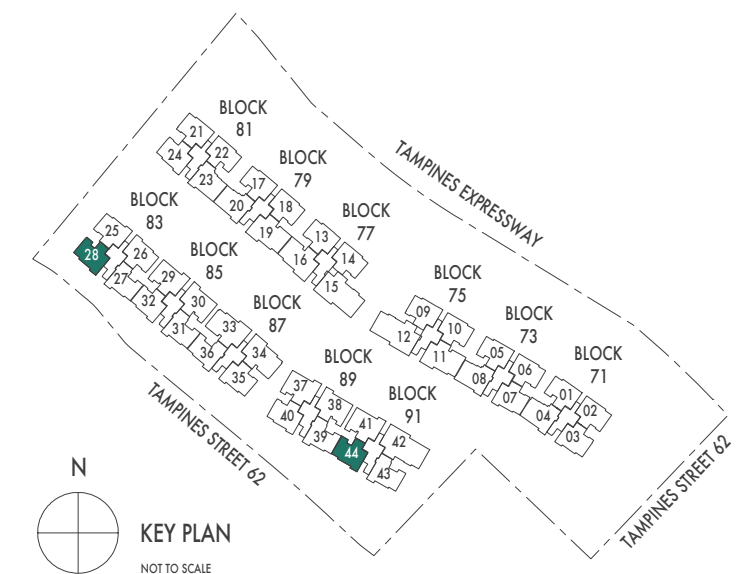
LEGEND

W - Washer F - Fridge

Area includes AC ledge, balcony, private enclosed space (PES) and strata void (where applicable). The above plans and illustrations are subject to change as may be required or approved by the relevant authorities. All floor areas are approximate only and subject to final survey. Please refer to key plan for orientation. Service voids and ledges are excluded from strata area. The balcony shall not be enclosed. Only approved balcony screen are to be used. For an illustration of the approved balcony screen, please refer to page 16 of this brochure.



SCALE

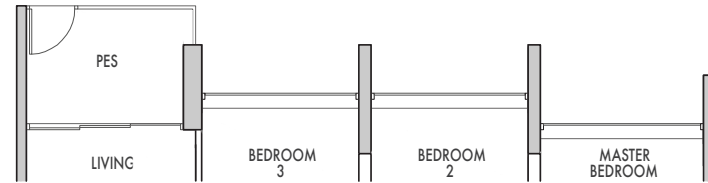


3 BEDROOM DELUXE + STUDY

TYPE C2a (p)

91 sqm (980 sqft)

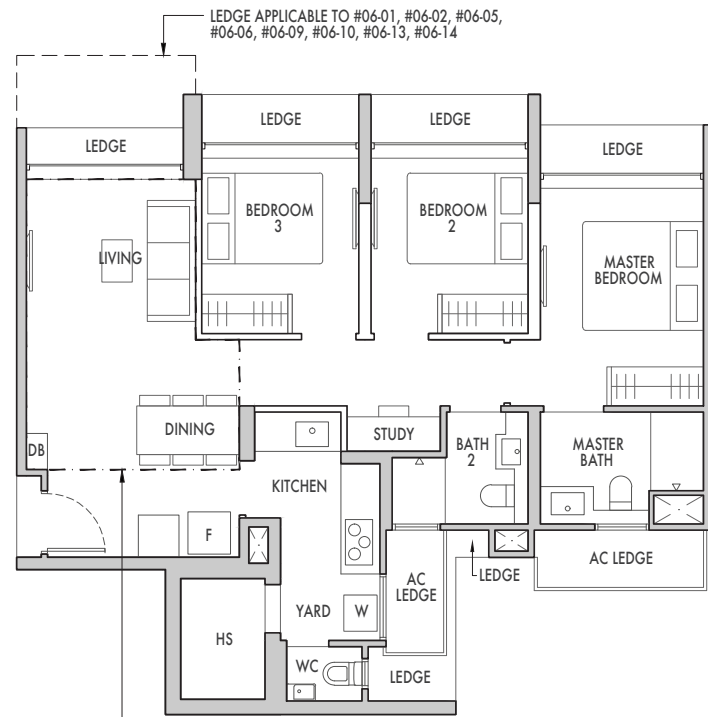
BLOCK 71 #05-02	MIRRORED BLOCK 71 #05-01
BLOCK 73 #05-06	BLOCK 73 #05-05
BLOCK 75 #05-10	BLOCK 75 #05-09
BLOCK 77 #05-14	BLOCK 77 #05-13



TYPE C2a

86 sqm (926 sqft)

BLOCK 71 #06-02 to #14-02	MIRRORED BLOCK 71 #06-01 to #14-01
BLOCK 73 #06-06 to #14-06	BLOCK 73 #06-05 to #14-05
BLOCK 75 #06-10 to #14-10	BLOCK 75 #06-09 to #14-09
BLOCK 77 #06-14 to #14-14	BLOCK 77 #06-13 to #14-13



TYPE C2a (PH)

102 sqm (1098 sqft)

Strata void area of 16 sqm/ 172 sqft above Living and Dining with high volume ceiling of approx. 5.2m

BLOCK 71 #15-02	MIRRORED BLOCK 71 #15-01
BLOCK 73 #15-06	BLOCK 73 #15-05
BLOCK 75 #15-10	BLOCK 75 #15-09
BLOCK 77 #15-14	BLOCK 77 #15-13

LEGEND

W - Washer F - Fridge

Area includes AC ledge, balcony, private enclosed space (PES) and strata void (where applicable). The above plans and illustrations are subject to change as may be required or approved by the relevant authorities. All floor areas are approximate only and subject to final survey. Please refer to key plan for orientation. Service voids and ledges are excluded from strata area. The balcony shall not be enclosed. Only approved balcony screen are to be used. For an illustration of the approved balcony screen, please refer to page 16 of this brochure.



SCALE

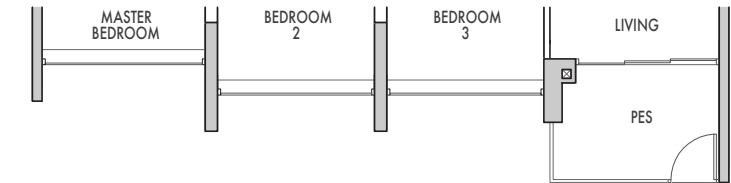


3 BEDROOM PREMIUM + STUDY

TYPE C2b (p)

91 sqm (980 sqft)

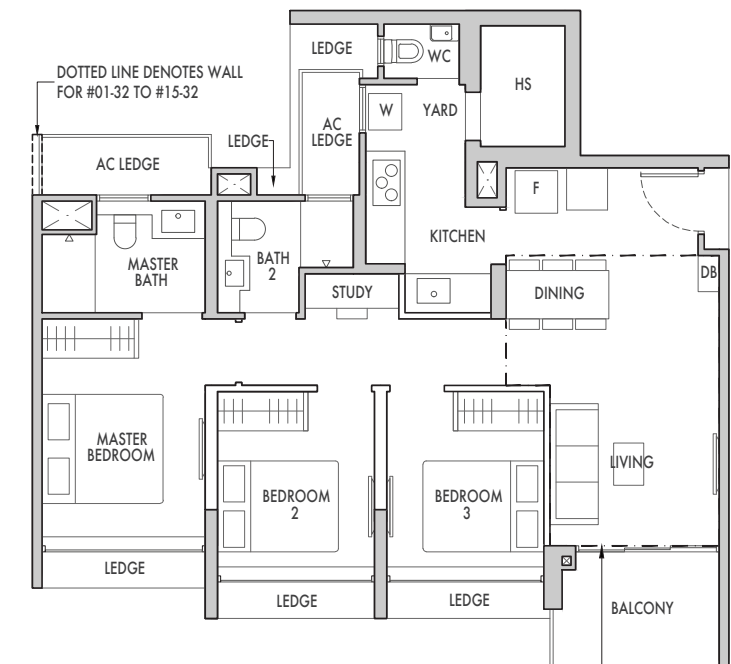
BLOCK 81 #01-24	MIRRORED BLOCK 71 #01-07
BLOCK 83 #01-26	BLOCK 83 #01-25
BLOCK 85 #01-32	BLOCK 87 #01-35
BLOCK 89 #01-40	



TYPE C2b

91 sqm (980 sqft)

BLOCK 81 #02-24 to #14-24	MIRRORED BLOCK 71 #03-03 to #14-03
BLOCK 83 #02-26 to #14-26	BLOCK 73 #02-07 to #14-07
BLOCK 85 #02-32 to #14-32	BLOCK 83 #02-25 to #14-25
BLOCK 89 #02-40 to #14-40	BLOCK 87 #02-35 to #14-35



TYPE C2b (PH)

107 sqm (1152 sqft)

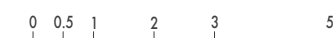
Strata void area of 16 sqm/ 172 sqft above Living and Dining with high volume ceiling of approx. 5.2m

BLOCK 81 #15-24	MIRRORED BLOCK 71 #15-03
BLOCK 83 #15-26	BLOCK 73 #15-07
BLOCK 85 #15-32	BLOCK 83 #15-25
BLOCK 89 #15-40	BLOCK 87 #15-35

LEGEND

W - Washer F - Fridge

Area includes AC ledge, balcony, private enclosed space (PES) and strata void (where applicable). The above plans and illustrations are subject to change as may be required or approved by the relevant authorities. All floor areas are approximate only and subject to final survey. Please refer to key plan for orientation. Service voids and ledges are excluded from strata area. The balcony shall not be enclosed. Only approved balcony screen are to be used. For an illustration of the approved balcony screen, please refer to page 16 of this brochure.



SCALE

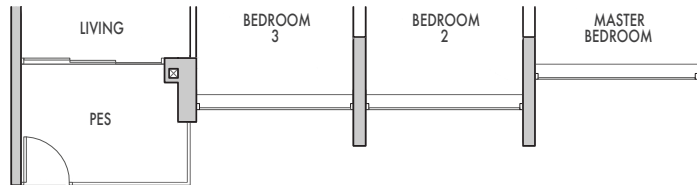


3 BEDROOM PREMIUM + STUDY

TYPE C3 (p)

89 sqm (958 sqft)

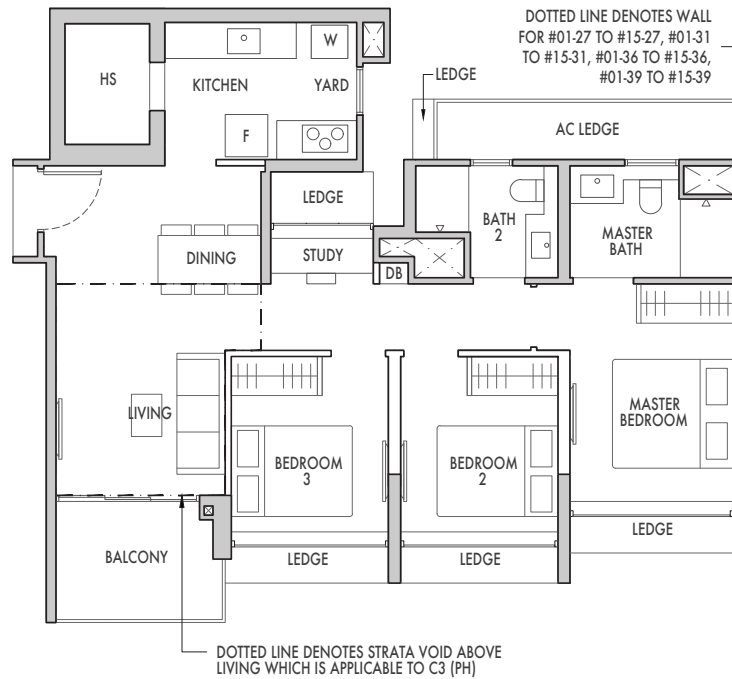
- MIRRORED**
BLOCK 87
#01-36
- BLOCK 83**
#01-27
- BLOCK 85**
#01-31
- BLOCK 89**
#01-39
- BLOCK 91**
#01-43



TYPE C3

89 sqm (958 sqft)

- MIRRORED**
BLOCK 87
#02-36 to #14-36
- BLOCK 83**
#02-27 to #14-27
- BLOCK 85**
#02-31 to #14-31
- BLOCK 89**
#02-39 to #14-39
- BLOCK 91**
#02-43 to #14-43



TYPE C3 (PH)

100 sqm (1076 sqft)

Strata void area of 11 sqm/ 118 sqft above Living with high volume ceiling of approx. 5.2m

- MIRRORED**
BLOCK 87
#15-36
- BLOCK 83**
#15-27
- BLOCK 85**
#15-31
- BLOCK 89**
#15-39
- BLOCK 91**
#15-43

LEGEND

W - Washer F - Fridge

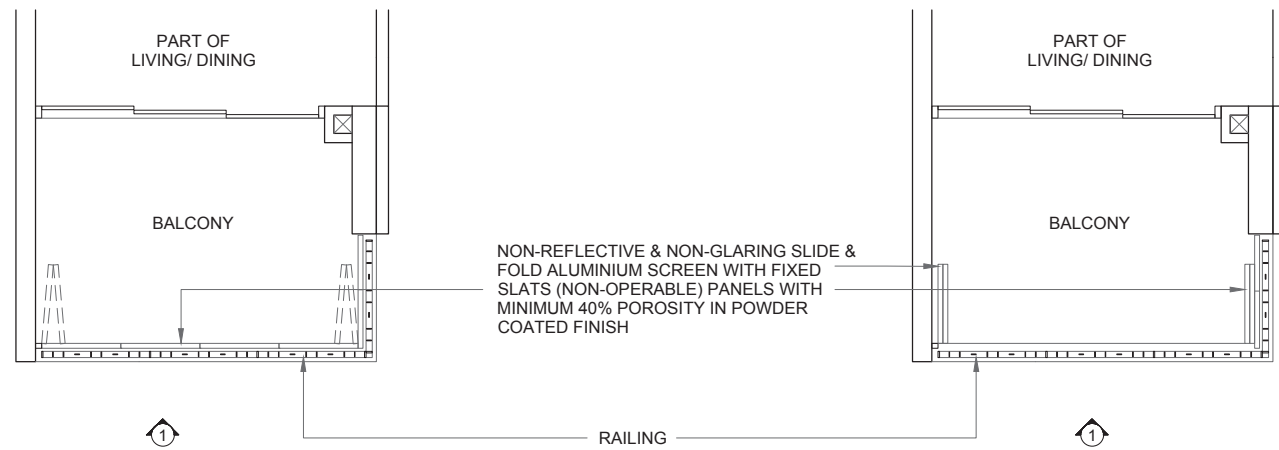
Area includes AC ledge, balcony, private enclosed space (PES) and strata void (where applicable). The above plans and illustrations are subject to change as may be required or approved by the relevant authorities. All floor areas are approximate only and subject to final survey. Please refer to key plan for orientation. Service voids and ledges are excluded from strata area. The balcony shall not be enclosed. Only approved balcony screen are to be used. For an illustration of the approved balcony screen, please refer to page 16 of this brochure.



SCALE

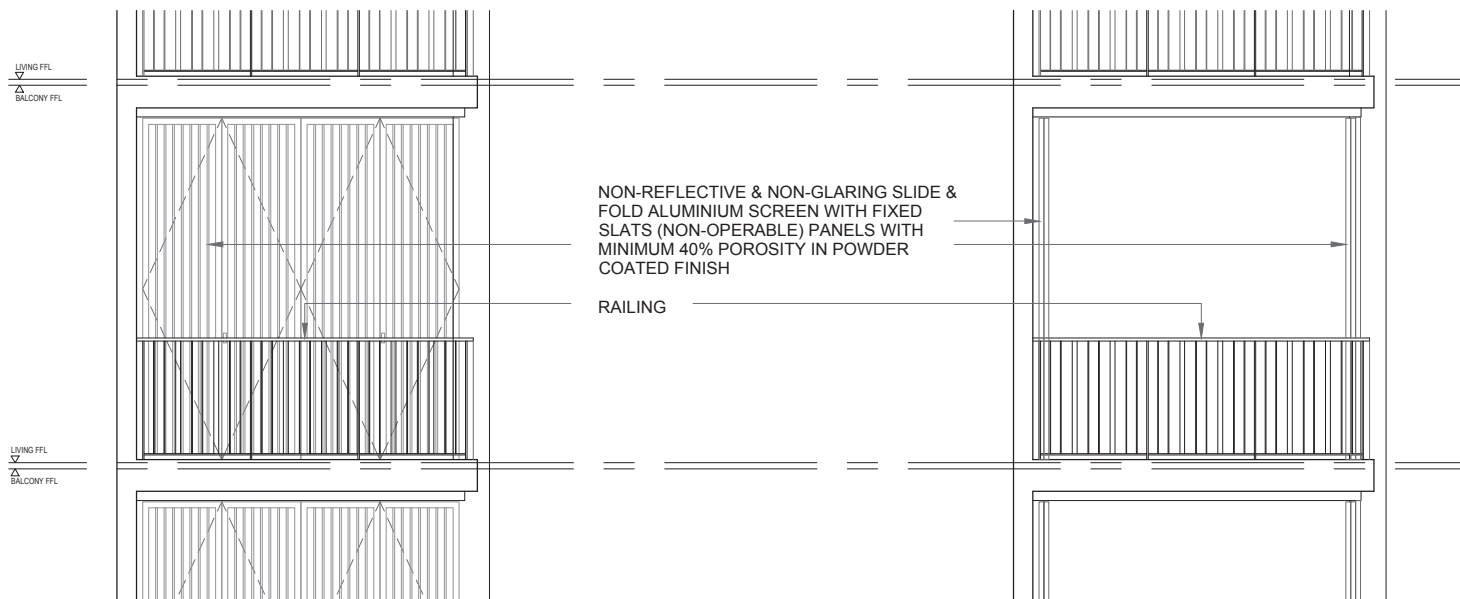


BALCONY SCREEN DETAILS



TYPICAL RETRACTABLE BALCONY SCREEN (CLOSED) - PLAN

TYPICAL RETRACTABLE BALCONY SCREEN (OPEN) - PLAN



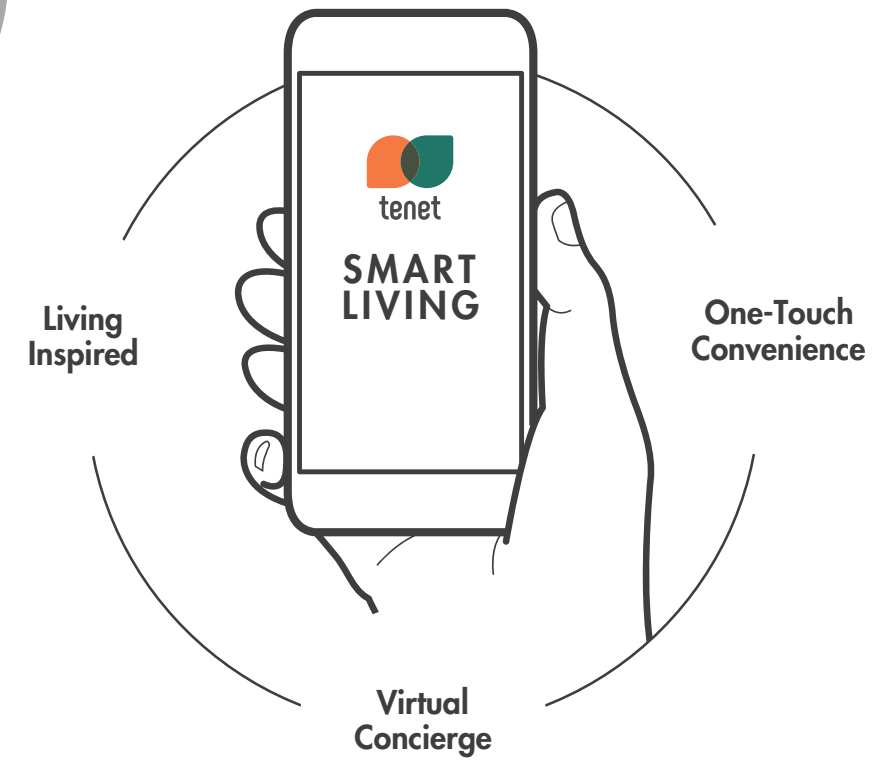
TYPICAL RETRACTABLE BALCONY SCREEN (CLOSED) - ELEVATION 1

TYPICAL RETRACTABLE BALCONY SCREEN (OPEN) - ELEVATION 1

NOTE:

1. THE PRIVATE ENCLOSED SPACE (PES) AND BALCONY SHALL NOT BE ENCLOSED UNLESS THE SCREEN IS APPROVED BY THE RELEVANT AUTHORITIES.
2. THE PROPOSED PES AND BALCONY SCREEN SHALL ALLOW NATURAL VENTILATION AT ALL TIMES INCLUDING WHEN THE SCREENS ARE FULLY CLOSED AND ARE CAPABLE OF BEING FULLY RETRACTED.
3. INFORMATION IS ACCURATE AT POINT OF PRINTING.

ONE TOUCH TO SMARTER LIVING



INSPIRED LIVING



Unlimited privileges
Exclusive deals and promotions.



Keep fit, stay active
Take your pick from Zumba, Yoga, Pilates or Dance classes to lead a healthy lifestyle.



Learn new skills
Learn to swim safely, or pick up tennis from certified and experienced coaches and instructors.

VIRTUAL CONCIERGE



24/7 facility booking
Select and book your desired facility whenever, wherever.



Payment made easy
Pay your maintenance fees through the app.



Hassle-free home help
From house cleaning and choked pipes to air-conditioner maintenance to choose from, a curated list of services at your fingertips.

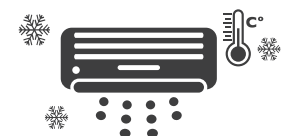
ONE-TOUCH CONVENIENCE



Smart Gateway
The heart of smart living technology.



Your virtual doorman
Unlock your doors remotely.



Pre-arrival cooling
Your home is cooled to the right temperature even before you arrive.

Disclaimer: The content above is subject to terms and conditions. Homeowners will be required to log in via the phone application to access the functions and services listed above. Inspired Living and Virtual Concierge services are subject to change without prior notice and additional charges may apply.